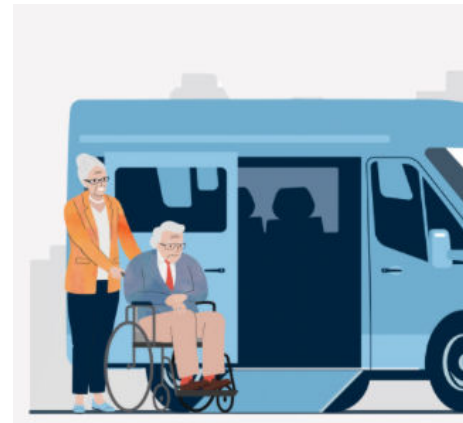


Transportation

Many older adults avoid public transportation due to unfamiliarity. Help your loved one feel comfortable by learning it together.



Transportation Needs

As we age, our transportation needs and challenges often change. **Mobility issues**, **vision impairments**, and **decreased reaction times** can make driving difficult. Reliance on public transportation or caregiver assistance may increase.

Transportation Options

There are **specialized transit services** offered by local governments or community organizations, **accessible ride-share options**, non-emergency **medical transportation** for healthcare visits, and **volunteer driver programs**.

Choosing Options

When choosing transportation for care recipients, consider **safety**, **reliability**, **cost**, and **specific needs**. Always have backup plans and emergency plans, as public transportation availability and access can change quickly.

Preparing for Trips

Schedule rides well in advance and **pack important care items**. Consider public **travel training** to help care recipients become comfortable with planning trips, finding stops, transferring, and reading bus schedules.

The Senior Alliance Transportation

The **Senior Alliance Transportation Program** provides rides for older adults and caregivers in western Wayne County and Downriver. Our services ensure safe, accessible transit to medical and social services appointments when other transportation services are unavailable or inaccessible. The Senior Alliance provides resources for local transportation services to **support** the **independence** and **mobility** of older adults in the community.